

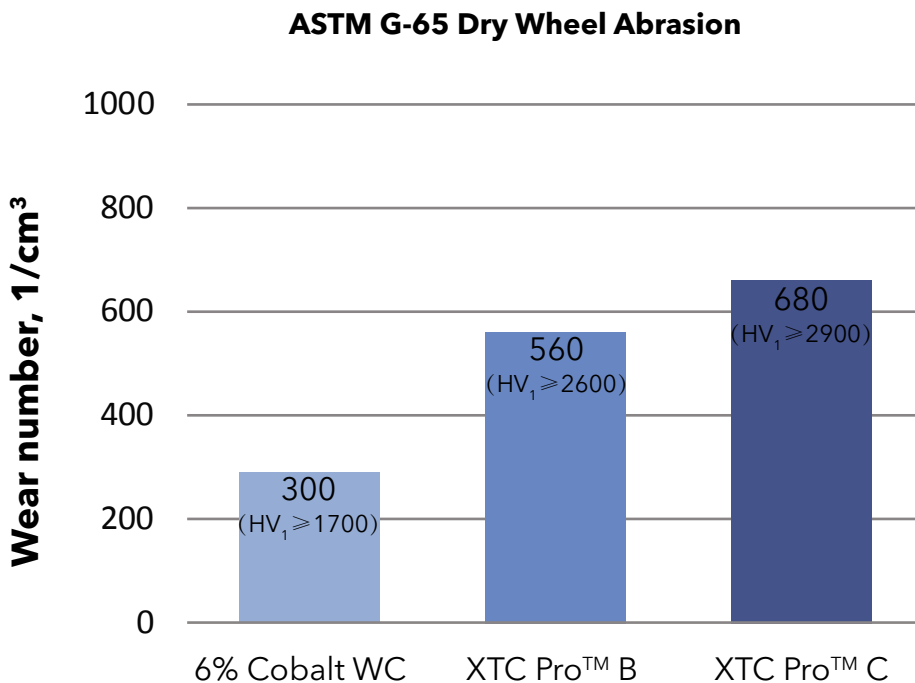
HMT

H.M.T. (Hard Materials Technologies) GmbH



XTC Pro™ Composite Carbide

XTC Pro™ Composite Carbide is a unique tungsten carbide, which resets the abrasive wear resisting standard. The innovative recipe of Pro™ sintering of the raw materials without the need for a softer metal binder. Eliminating a metallic binder and maintaining extra-fine grain size contribute to optimum hardness and wear resistance, making Pro™ Composite Carbide a durable material withstanding high abrasive wear.



Focusing Tubes

Superior wear resistance means:

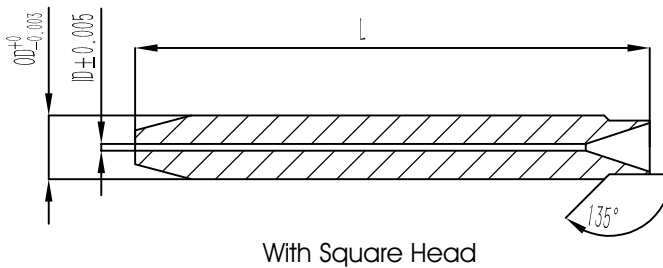
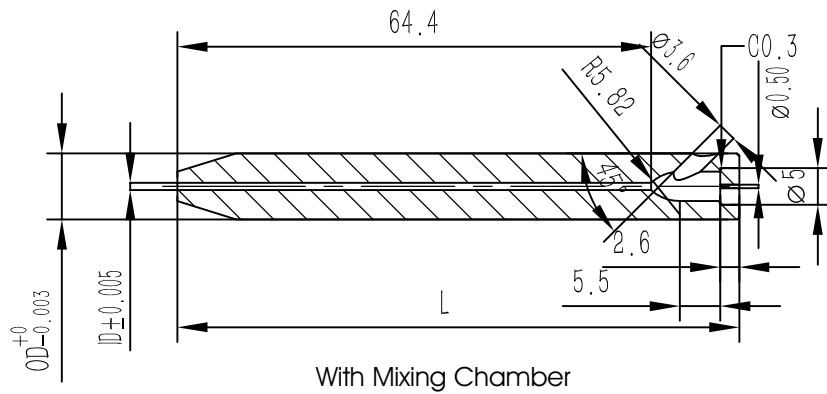
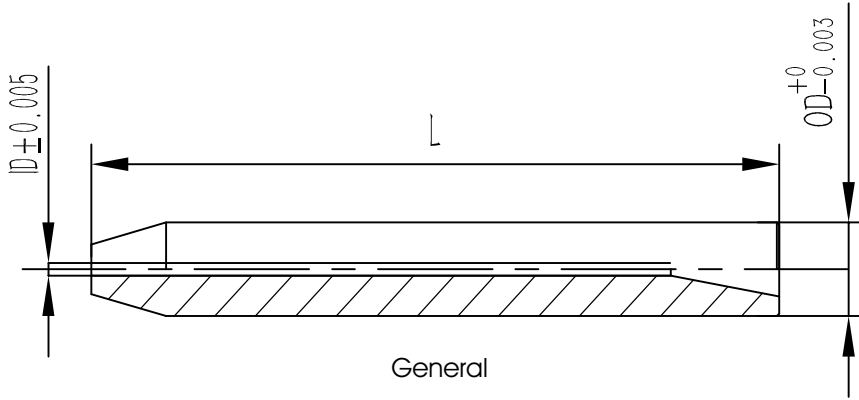
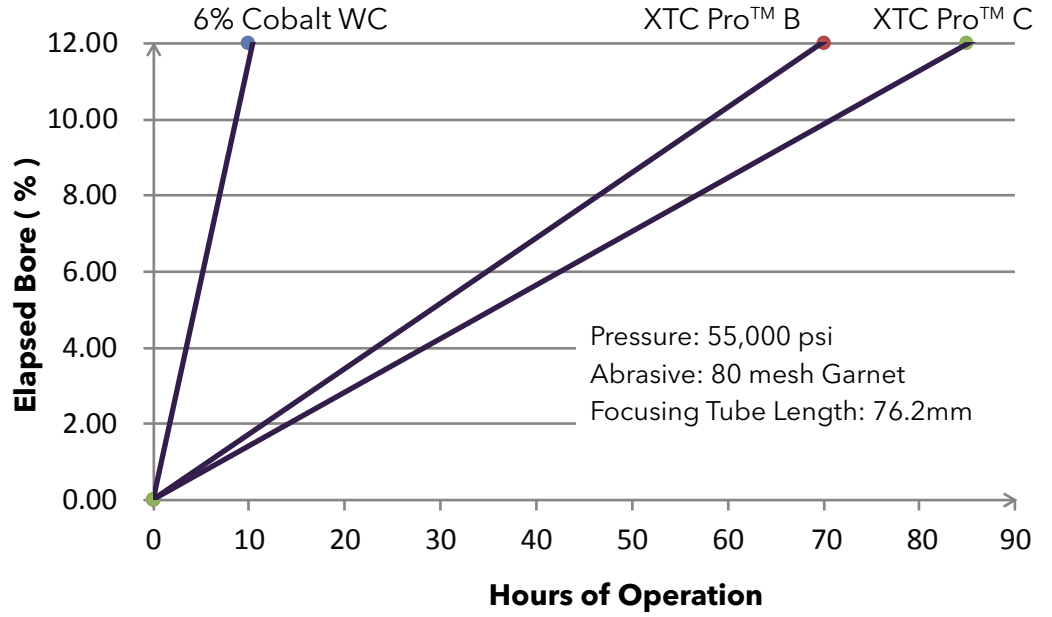
- Lower focus tube consumption
- Optimum jet pattern and increased cutting velocity/accuracy
- System downtime reduction by reducing replacement and system calibration steps

XTC Pro™ is your right choice

Main Characteristics:

- Consistently Long Service Life
- Highly Wear-resistant
- Longer Service Life than Normal WC

XTC Pro™ Focusing Tube Performance



Our standard focusing tubes:

Part Number	OD(mm)	L(mm)	ID(mm)	Remarks
HMT-600-0700-0760-00	6.00	70	0.76	
HMT-600-0700-1020-00	6.00	70	1.02	
HMT-600-0762-0760-00	6.00	76.2	0.76	
HMT-600-0762-1020-00	6.00	76.2	1.02	
HMT-600-0762-1270-00	6.00	76.2	1.27	
HMT-635-0508-0760-00	6.35	50.8	0.76	
HMT-635-0508-1020-00	6.35	50.8	1.02	
HMT-635-0762-0500-00	6.35	76.2	0.50	
HMT-635-0762-0760-00	6.35	76.2	0.76	
HMT-635-0762-1020-00	6.35	76.2	1.02	
HMT-670-0700-0760-00	6.70	70	0.76	
HMT-670-0700-1020-00	6.70	70	1.02	
HMT-670-0762-0760-00	6.70	76.2	0.76	
HMT-670-0762-1020-00	6.70	76.2	1.02	
HMT-670-0762-1270-00	6.70	76.2	1.27	
HMT-714-0762-0500-00	7.14	76.2	0.50	
HMT-714-0762-0760-00	7.14	76.2	0.76	
HMT-714-0762-0900-00	7.14	76.2	0.91	
HMT-714-0762-1020-00	7.14	76.2	1.02	
HMT-714-0762-1270-00	7.14	76.2	1.27	
HMT-714-1016-0760-00	7.14	101.6	0.76	
HMT-714-1016-0900-00	7.14	101.6	0.91	
HMT-714-1016-1020-00	7.14	101.6	1.02	
HMT-762-0762-0760-00	7.62	76.2	0.76	
HMT-762-0762-1020-00	7.62	76.2	1.02	
HMT-800-1016-0760-00	8.00	101.6	0.76	
HMT-800-1016-1020-00	8.00	101.6	1.02	
HMT-812-0762-0760-00	8.12	76.2	0.76	
HMT-812-0762-1020-00	8.12	76.2	1.02	
HMT-897-0762-0760-00	8.97	76.2	0.76	
HMT-897-0762-1020-00	8.97	76.2	1.02	
HMT-897-0762-0760-01	8.97	76.2	0.76	Mixing Chamber
HMT-897-0762-1020-01	8.97	76.2	1.02	Mixing Chamber
HMT-943-0762-0760-00	9.43	76.2	0.76	
HMT-943-0762-0900-00	9.43	76.2	0.91	
HMT-943-0762-1020-00	9.43	76.2	1.02	
HMT-945-0762-0760-00	9.45	76.2	0.76	
HMT-945-0762-0900-00	9.45	76.2	0.91	
HMT-945-0762-1020-00	9.45	76.2	1.02	
HMT-945-0762-0760-01	9.45	76.2	0.76	Square Head
HMT-945-0762-0900-01	9.45	76.2	0.91	Square Head
HMT-945-0762-1020-01	9.45	76.2	1.02	Square Head
HMT-945-0800-0900-00	9.45	80	0.91	
HMT-947-0762-0760-00	9.47	76.2	0.76	
HMT-947-0762-0900-00	9.47	76.2	0.91	
HMT-947-0762-1020-00	9.47	76.2	1.02	

Other Applications:

Its excellent material properties make XTC Pro™ composite carbides the material of choice for

- Dental nozzles
- Sand blasting nozzles
- Descaling nozzles
- Slurry nozzles
- Centrifuge nozzles
- Separation cups for fluids and solids
- Valve spare parts



H.M.T. (Hard Materials Technologies) GmbH

Serge WEYDERT

Managing Director

Phone: +352 691 96 86 13

E-mail: weydert.s@hmt-cera.com

<http://www.hmt-cera.com>

Add: 4,um Bierg 9170 Mertzig

Grand Duchy of Luxembourg (GDL)